

Mooloolaba Foreshore Revitalisation Stage 1 Northern Parkland

Project number: B-4741

July construction update

(all works weather and site conditions permitting)

Construction is continuing on Stage 1 Northern Parkland of the Mooloolaba Foreshore Revitalisation project.

Features include a new viewing platform with seating at the Alex Bluff Foreshore Park, a new accessible boardwalk linking Alexandra Headland and Mooloolaba, new open space for the community to come together and connect with nature, a new sheltered barbecue area and public amenities, two new sets of stairs linking Mooloolaba Esplanade to the parkland and beach and the recently upgraded seawall.

Details of work

Viewing platform and boardwalk

The foundations for the new viewing platform and boardwalk are complete. Sections of the boardwalk decking will be installed throughout July, with contractors working from the southern end of the new boardwalk and moving north toward Alex Bluff.

Local stone masons will undertake stone cladding works to the sides of new stairs between the existing outdoor gym area and new parkland after the new concrete stairs are poured.

Underground services works will continue.

Alex Bluff Park pedestrian pathway works

Construction will continue on the new pedestrian pathway that links Mooloolaba

Esplanade to the existing amenities block and new viewing platform.

A temporary alternative pathway to the public amenities block and portable people with disabilities toilet remains in place.

Beach Access #168 remains temporarily closed.

Stormwater and drainage improvements

Stormwater and drainage improvements continue.

Weeding and revegetation

Weed clearing will continue. Sections of biodegradable weed matting are being installed along the steep embankment to minimise weed recurrence and allow new native plants to establish.

Over 1,000 new plants will be planted along the embankment and approximately 50 new trees grown throughout the parkland.

What to expect during these works?

Construction hours will remain as primarily between 6.30am and 6pm, Monday – Friday, weather and site conditions permitting. Some Saturday works will continue between 7am and 1pm as required.

Intermittent, low-medium level noise impacts can be expected with construction machinery and vehicles on site.

Some temporary changes to pedestrian access will be required within the construction zone.

Every effort will be made to minimise construction impacts where possible.

To see the location of the works area, please refer to the map below.

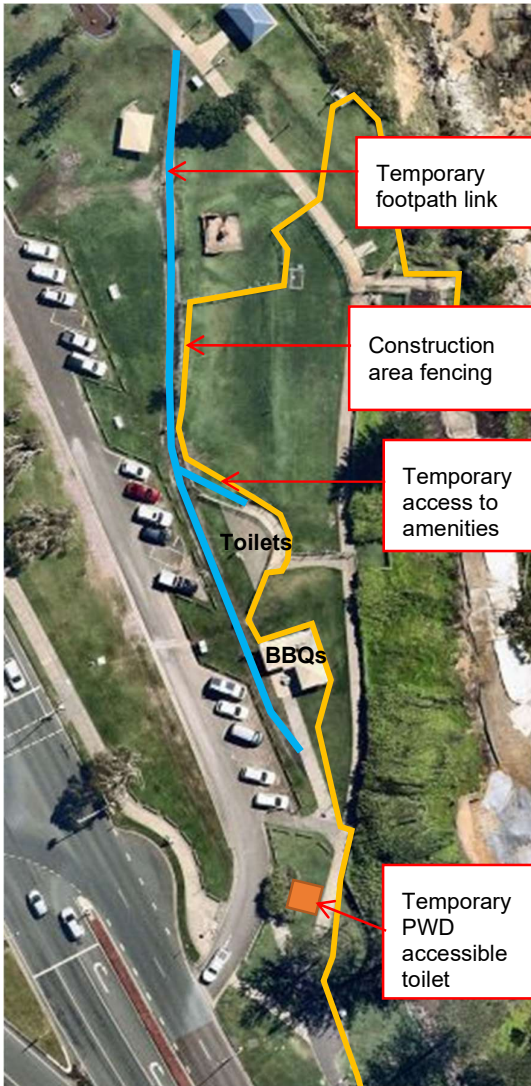


Figure 1: Northern Parkland, works area

Register to receive project updates

To subscribe to our regular construction updates, send your contact details to mfr@sunshinecoast.qld.gov.au.

Contact the project team

For any question about these works contact Council's customer service team on (07) 5475 7272 (Monday to Friday 8.15am-5pm) or email mfr@sunshinecoast.qld.gov.au