

## **Mooloolaba Transport Corridor Upgrade (MTCU) Project**

Project number: H3731

### **Temporary driveway closures and alternative parking for residents of 10 and 12 Muraban Street From 9am Mon 16 September to 9am Thu 19 September (weather permitting)**

#### **Driveway crossover construction – Muraban Street**

As part of the Mooloolaba Transport Corridor Upgrade (MTCU) a new roundabout is being constructed at the intersection of Muraban Street and Naroo Court.

Construction work includes the demolition and reconstruction of existing driveway crossovers to some residences, along with new kerb and roadworks on Muraban Street and Naroo Court.

To enable this work to be done as quickly and safely as possible, the project team will temporarily close vehicle access to driveways at 10 and 12 Muraban Street and provide alternative, nearby parking for residents.

This is necessary as vehicles will not be able to drive over the new driveway crossovers until the new concrete is cured (hard) and safe.

Pedestrian access will remain to residences.

#### **What to expect during these works**

From 9am Monday 16 September until 9am Thursday 19 September all vehicles requiring access to/from these residences during this period must be removed from the premises and parked in the allocated alternative on street or off street parking areas.

Please note that vehicle entry or exit to these residences during the construction period will not be available. Emergency service vehicles will access under traffic control or emergency status if required

Construction work for the driveway crossovers will take place as day works. Full driveway access will be reinstated from **9am Thursday 19 September**.

Safety fencing will be in place and signage will help to communicate the changed traffic conditions to residents and visitors.

The project team will liaise with directly affected owners and residents about these works as required.

Medium level, intermittent construction noise can be expected.

The construction team will try to mitigate construction impacts in relation to surrounding residents wherever possible and safe to do so.

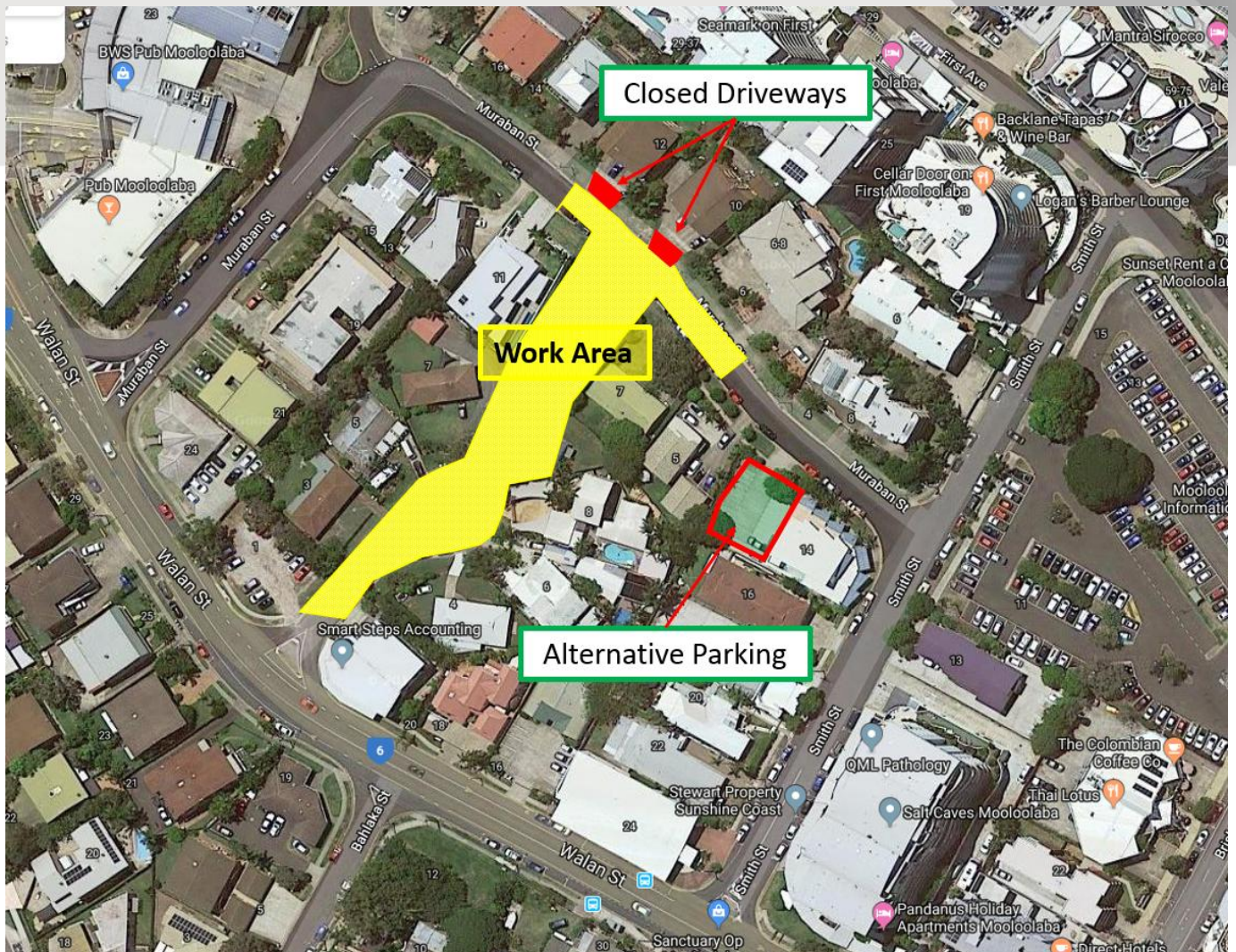
Please see the **map on page 2** for further details.

#### **Contact the project team**

For any questions about these works visit the website at [www.sunshinecoast.qld.gov.au](http://www.sunshinecoast.qld.gov.au) (Search for the Mooloolaba Transport Corridor Upgrade Project) or contact the project team on:

Email: [mooloolabatransportcorridorupgrade@sunshinecoast.qld.gov.au](mailto:mooloolabatransportcorridorupgrade@sunshinecoast.qld.gov.au)

Phone: 1800 531 597



*Figure 1 – Temporary changes to traffic conditions (driveway access and parking) for residents of 10 and 12 Muraban Street*

All information contained in this communication is accurate at the time of distribution however works and dates are subject to change due to circumstances outside of Sunshine Coast Council's control.

[www.sunshinecoast.qld.gov.au](http://www.sunshinecoast.qld.gov.au)  
[mail@sunshinecoast.qld.gov.au](mailto:mail@sunshinecoast.qld.gov.au)  
T 07 5475 7272 F 07 5475 7277  
Locked Bag 72 Sunshine Coast Mail Centre Qld 4560