

7.2.26 Woombye local plan code

7.2.26.1 Application

- (1) This code applies to assessable development:-
 - (a) within the Woombye local plan area as shown on Map ZM27 contained within **Schedule 2 (Mapping)**; and
 - (b) identified as requiring assessment against the Woombye local plan code by the tables of assessment in **Part 5 (Tables of assessment)**.
- (2) The following provisions of the code are assessment benchmarks for applicable assessable development:-
 - (a) **section 7.2.26.3 (Purpose and overall outcomes)**;
 - (b) **Table 7.2.26.4.1 (Performance outcomes and acceptable outcomes for assessable development)**; and
 - (c) **Figure 7.2.26A (Woombye local plan elements)**.

7.2.26.2 Context and setting

This section is extrinsic material under section 15 of the *Statutory Instruments Act 1992* and is intended to assist in the interpretation of the Woombye local plan code.

The Woombye local plan area is located in the central hinterland of the Sunshine Coast immediately to the south of Nambour. Situated between the North Coast Rail Line and Nambour Connection Road, the local plan area includes Woombye's business centre and adjacent residential areas. The local plan area has a land area of approximately 230 hectares.

The local plan area is characterised by variable topography with the established urban areas in the north comprising gently undulating land and the developing southern area generally comprising steeper slopes, particularly adjacent to Pine Grove Road and Woombye-Palmwoods Road. Parts of the local plan area are subject to periodic flooding from Paynter Creek which is located immediately to the west and traverses the local plan area north of the town centre.

Woombye is a small, attractive rural town providing a range of business, community, social, and recreational facilities to service the local needs of its resident population as well as the needs of immediately surrounding rural and rural residential communities. Residential areas are characterised by dwelling houses on relatively large suburban lots.

Heritage buildings and places, primarily focused in Blackall Street, contribute to the character and historical values of the town. Set within a picturesque rural landscape, Woombye has a separate and distinct identity from nearby settlements, including Nambour.

The North Coast Rail Line, which forms the western boundary of the local plan area, is proposed to be realigned and duplicated. The planned upgrade includes provision for station improvements and a new road overpass extending from Blackall Street to Back Woombye Road. The preferred future use of surplus rail land arising from the proposed upgrade of the rail line will also be an important consideration.

Woombye's role as a public transport node will be improved by the planned rail line upgrade and new transit hub. The major vehicle access into Woombye is via Blackall Street from Nambour Connection Road in the east. Taintons Road provides access to the southern part of the local plan area via Woombye-Palmwoods Road.

Urban zoned land within the local plan area is connected, or has the ability to be connected, to reticulated water and sewerage.

7.2.26.3 Purpose and overall outcomes

- (1) The purpose of the Woombye local plan code is to provide locally relevant planning provisions for the assessment of development within the Woombye local plan area.

- (2) The purpose of the Woombye local plan code will be achieved through the following overall outcomes:-
- (a) Woombye remains a small rural town, primarily servicing the local needs of its resident population and immediately surrounding rural communities.
 - (b) Urban development within the Woombye local plan area is limited to land within the urban growth management boundary so as to protect and reinforce the separate identity of Woombye, provide for the efficient provision of *infrastructure* and services, avoid constrained land and protect the landscape character and productivity of surrounding rural lands.
 - (c) Development retains important built form, *streetscape*, landscape character and natural environment elements that contribute to the character, setting, and identity of Woombye as a rural town with a strong sense of place and associations with the past.
 - (d) Development in the local plan area protects and retains the *character area* in Woombye (Blackall Street) and buildings identified as having cultural heritage or *streetscape* significance as important elements of local character and identity.
 - (e) Development in the Local centre zone supports the role and function of the Woombye Town Centre as a local (full service) activity centre, providing a wide range of small-scale convenience goods and services to meet the needs of its resident population and immediately surrounding rural communities. The town centre remains compact and consolidated, with any further expansion of business uses contained to land included in the Local centre zone.
 - (f) The “country town” feel, traditional main street built form and heritage and *streetscape* character of Woombye’s Town Centre is retained and reinforced, with Blackall Street enhanced as a wide, attractive and pedestrian friendly main street. Development along Blackall Street addresses the street, complements the traditional *streetscape* and building form, and retains the mature street trees.
 - (g) Development in the Low density residential zone protects and is sympathetic to the traditional rural town character and identity of Woombye, typified by low-rise detached housing in generous landscaped grounds. Reconfiguring a lot in the Low density residential zone incorporates road and lot layouts which sensitively respond to site characteristics and are consistent with the established subdivision pattern of the town, characterised by regular shaped lots, grid or modified grid layout, open *streetscape* and mature street trees. Development in the zone provides an interconnected and permeable network of roads, pedestrian and cycle paths and open space and buffering to surrounding rural lands.
 - (h) Development in the Medium density residential zone is sympathetic to the traditional rural town character and heritage values of Woombye and is of a bulk and architectural scale that does not dominate the *streetscape* and is compatible with surrounding development.
 - (i) Development is designed and sited to protect significant environmental and riparian areas and to sensitively respond to the physical characteristics and constraints of land in the local plan area, including steeper slopes and remnant *vegetation* and other *ecologically important areas*.
 - (j) Development in the local plan area is supported by a network of open space to meet the needs of the local community, and facilitates safe and convenient pedestrian and cycle connections to, between and around key destinations within the local plan area.
 - (k) Development does not compromise or adversely impact upon the planned realignment and duplication of the North Coast Rail Line and the possible future provision of a grade separated crossing within the local plan area.
 - (l) In the event that the North Coast Rail Line is re-aligned within the life of the planning scheme, the pattern of land use and the provision of transport and other *infrastructure* in the Woombye local plan area is adapted to appropriately utilise surplus railway land, so as to consolidate and provide for improvements to Woombye’s town centre, particularly in terms of the provision of community facilities and *public open space*.

7.2.26.4 Performance outcomes and acceptable outcomes

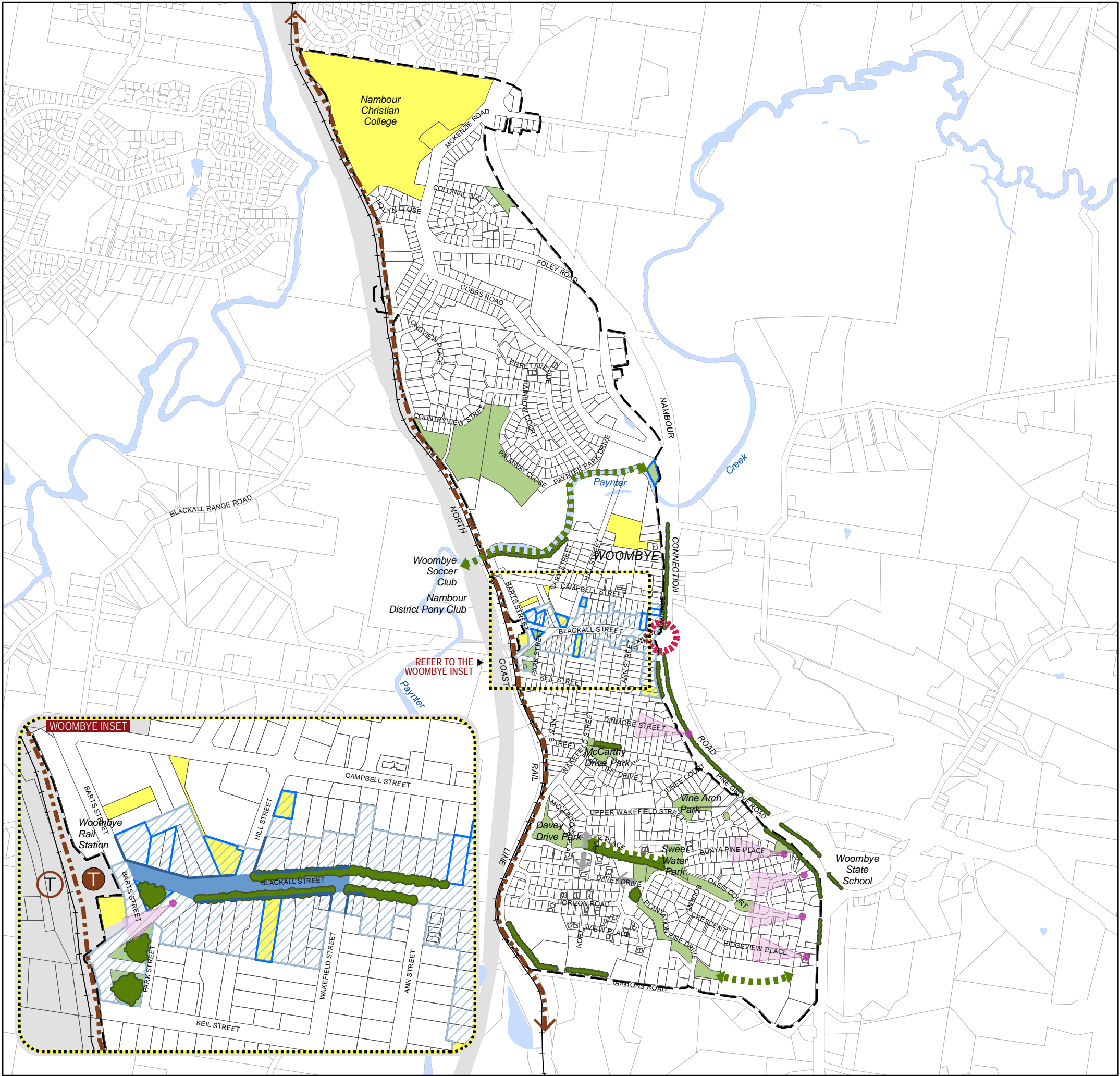
Table 7.2.26.4.1 Performance outcomes and acceptable outcomes for assessable development

Performance Outcomes		Acceptable Outcomes	
<i>Development in the Woombye Local Plan Area Generally (All Zones)</i>			
PO1	Development provides for buildings, structures and landscaping that is consistent with and reflects the traditional <i>streetscape</i> and architectural character of Woombye in terms of scale, siting, form, composition and use of materials.	AO1.1	Development provides for the retention and/or adaptive re-use, with limited modification, of buildings which have cultural heritage or, character significance. Editor's note— Section 8.2.9 (Heritage and character areas overlay code) sets out requirements for development on or in proximity to <i>local heritage places</i> and in <i>character areas</i> .
		AO1.2	Buildings and structures incorporate traditional external building materials, such as timber cladding and corrugated iron roofs.
		AO1.3	For residential, business and community activities, roof forms are simple, traditional Queensland-style roof designs including gable, hip, pitched or multiple gable roof forms.
PO2	Development provides for the retention and enhancement of key landscape elements including historical landmarks, significant views and vistas, existing character trees and areas of significant <i>vegetation</i> contributing to the character, setting and sense of place of Woombye.	AO2.1	Development provides for the retention of old stone retaining walls, historical landmarks, memorials and monuments.
		AO2.2	Development protects and emphasises, and does not intrude upon, important view lines to the Blackall Range and other views to surrounding rural and natural areas identified on Figure 7.2.26A (Woombye local plan elements) .
		AO2.3	Development provides for the retention and enhancement of existing mature trees and character <i>vegetation</i> contributing to the vegetated backdrop and <i>streetscape</i> character of the local plan area, including where identified on Figure 7.2.26A (Woombye local plan elements) . Note—in some circumstances, the eradication of weed species and planting of locally native species that make a comparable contribution to local character may also satisfy the Acceptable Outcome.
PO3	Development contributes to the establishment of attractive and coherent <i>streetscapes</i> and gateways to enhance the rural town character of, and sense of entry and arrival to, Woombye.	AO3.1	Development adjacent to a primary streetscape treatment area or identified gateway/entry point on Figure 7.2.26A (Woombye local plan elements) incorporates architectural and landscape treatments and other design elements which enhance the sense of entry and arrival to, and rural town character of, Woombye, and emphasise corner locations.
		AO3.2	Development provides for streetscape improvements which complement existing or proposed streetscape works in the local area to ensure continuity of <i>streetscapes</i>

Performance Outcomes		Acceptable Outcomes	
			<p>and landscape design.</p> <p>Note—Section 9.4.2 (Landscape code) sets out requirements for streetscape landscapes including entry statement landscapes.</p> <p>Note—a landscape master plan may provide further guidance regarding particular streetscape treatments in a local plan area.</p> <p>Note—streetscape materials and palettes can be referenced from the <i>Council's</i> Infrastructure and Guideline Standards for each centre as required</p>
PO4	Development does not compromise the provision and operation of <i>transport networks</i> , including:- (a) the proposed realignment and duplication of the North Coast Rail Line; and (b) the potential future grade separated rail line crossing in the vicinity of Woombye CWA Park.	AO4	No acceptable outcome provided.
PO5	Surplus rail land that may arise from the proposed realignment of the North Coast Rail Line provides for improvements to Woombye's Town Centre, particularly in terms of the provision of community facilities and urban open space.	AO5	No acceptable outcome provided.
PO6	Development on land with frontage to Paynter Creek, or on land otherwise identified as a local ecological linkage on Figure 7.2.26A (Woombye local plan elements) , facilitates the provision of the local ecological linkage.	AO6	No acceptable outcome provided. Editor's note— Section 8.2.3 (Biodiversity, waterways and wetlands overlay code) sets out requirements for the provision of ecological linkages.
PO7	Development for a <i>food and drink outlet</i> does not:- (a) provide for the establishment of a <i>high volume convenience restaurant</i> ; or (b) incorporate a drive-through facility.	AO7	No acceptable outcome provided.
Development in the Local Centre Zone			
PO8	Development in the Local centre zone provides for small scale uses and mixed uses that:- (a) support the role and function of Woombye Town Centre as a local (full service) activity centre; and (b) provide a wide range of goods and services to meet the convenience needs of Woombye's resident population and immediately surrounding rural community.	AO8	No acceptable outcome provided.
PO9	Development in the Local centre zone:- (a) is sympathetic to the rural town character and heritage values of Woombye; (b) complements the traditional built form and <i>streetscape</i> ; (c) addresses the street; (d) creates vibrant and active streets and public spaces; (e) provides continuous weather protection for pedestrians; and (f) provides integrated and functional parking and <i>access</i> arrangements	AO9	Development in the Local centre zone:- (a) provides for Blackall Street to be maintained as a wide, attractive and pedestrian friendly main street; (b) provides for <i>primary active street frontages</i> , built to the front boundary, where identified on Figure 7.2.26A (Woombye local plan elements) ; (c) maintains the appearance of fine-grained shopfronts addressing the street; (d) respects the layout, scale (including height and <i>setback</i>) and character of

Performance Outcomes		Acceptable Outcomes	
	that do not dominate the street.		<p>existing buildings;</p> <p>(e) provides all-weather protection for pedestrians in the form of continuous awnings and/or light verandah structures with decorative non-load bearing posts over footpath areas in conjunction with mature or semi-mature shade trees planted along the <i>site frontage</i> adjacent to the kerbside;</p> <p>(f) has simple, traditional Queensland-style roof designs such as hipped or gabled and parapet walls of various shapes facing the street;</p> <p>(g) has building openings overlooking and addressing the street;</p> <p>(h) uses understated colour schemes and low-reflective roofing and cladding materials;</p> <p>(i) ensures that signage is integrated with the building;</p> <p>(j) includes provision of landscaping, shaded seating and consistent and simple paving materials on footpaths; and</p> <p>(k) provides for on-site car parking at the rear or to one side of the development.</p>
Development in the Low Density Residential Zone			
PO10	Reconfiguring a lot in the Low density residential zone provides for lot sizes and a configuration of lots that is sympathetic to the rural town character and identity of the Woombye local plan area.	AO10.1	Reconfiguring a lot in the Low density residential zone provides for a minimum lot size of 800m ² .
		AO10.2	Reconfiguring a lot in the Low density residential zone provides for regular-shaped lots with a grid or modified grid street layout and subdivision pattern.
PO11	Reconfiguring a lot within the Low density residential zone:- (a) is designed to sensitively respond to site characteristics and avoids significant scarring of the landscape; and (b) provides for an interconnected system of local roads, pedestrian, cycle and open space links with adjoining land.	AO11	Reconfiguring a lot in the Low density residential zone:- (a) provides for a subdivision layout which minimises the extent of cut and fill required to accommodate new lots and roads; and (b) incorporates an interconnected, permeable internal road system, pedestrian, cycle and open space links.
Development in the Medium Density Residential Zone			
PO12	Development in the Medium density residential zone:- (a) provides for the establishment of a range of medium density housing compatible with a rural town setting; (b) is sympathetic to the rural town character and heritage values of Woombye; (c) is of a domestic scale that does not dominate the <i>streetscape</i> and is compatible with surrounding development; (d) provides for a building form that reflects the traditional Queensland style; (e) provides for generous open space to be maintained between buildings to preserve a predominantly open	AO12	Development in the Medium density residential zone:- (a) provides for larger buildings to be expressed as a series of linked smaller buildings that are similar in form and scale to a <i>dwelling house</i> ; (b) provides generous open spaces between buildings; (c) incorporates landscaping which complements the character of established gardens in the zone; (d) provides for a building form which reflects the traditional Queensland style and incorporates front facades and building elements, including wall articulation, pitched roof forms, roof overhangs, verandahs and prominent building entries, to reflect the character and heritage of buildings in

Performance Outcomes		Acceptable Outcomes	
	<p>feel and character;</p> <p>(f) provides for on-site car parking to be located and designed such that it does not dominate the <i>streetscape</i>;</p> <p>(g) maintains and protects the amenity of residents in adjoining development; and</p> <p>(h) provides for improved pedestrian connectivity between Campbell Street and Blackall Street.</p>		<p>Woombye;</p> <p>(e) provides car parking areas at the rear of and/or between buildings. Car parking areas are broken up and do not dominate the <i>streetscape</i>;</p> <p>(f) where fronting Blackall Street, provides an attractive street front address and overlooks the street; and</p> <p>(g) provides mid-block pedestrian linkages, between Campbell Street and Blackall Street.</p>



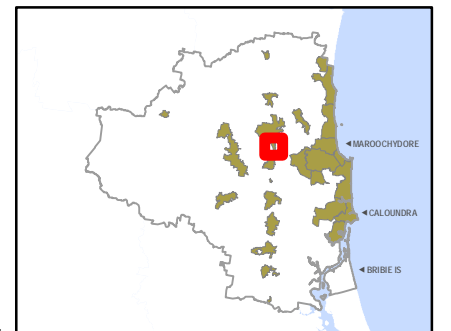
LEGEND

- Local Plan Area Boundary
- Waterway^{Note 1}
- Primary Active Street Frontage
- Primary Streetscape Treatment Area
- Local Ecological Linkage
- Greenspace^{Note 1}
- Community Activity/Facility^{Note 1}
- Character Vegetation
- Gateway/Entry Point
- Significant View
- Heritage Place^{Note 2}
- Character Area^{Note 2}
- Dedicated Public Transport Corridor
- Transit Hub
- Future Transit Hub
- Indicative Road Linkage/Access Point
- Proposed Rail Corridor Upgrade

0 95 190 380 570 760
1:13,963
Metres

Disclaimer
While every care is taken to ensure the accuracy of this product, neither the Sunshine Coast Regional Council nor the State of Queensland makes any representations or warranties about its accuracy, reliability, completeness or suitability for any particular purpose and disclaims all responsibility and all liability (including without limitation, liability in negligence) for all expenses, losses, damages (including indirect or consequential damage) and costs that may occur as a result of the product being inaccurate or incomplete in any way or for any reason.

© Crown and Council Copyright Reserved 2020
Geocentric Datum of Australia 2020 (GDA2020)



Note 1: For contextual purposes only.
Note 2: Refer to Heritage and Character Overlay maps in Schedule 2 (Mapping).

Figure 7.2.26A (Woombye Local Plan Elements)