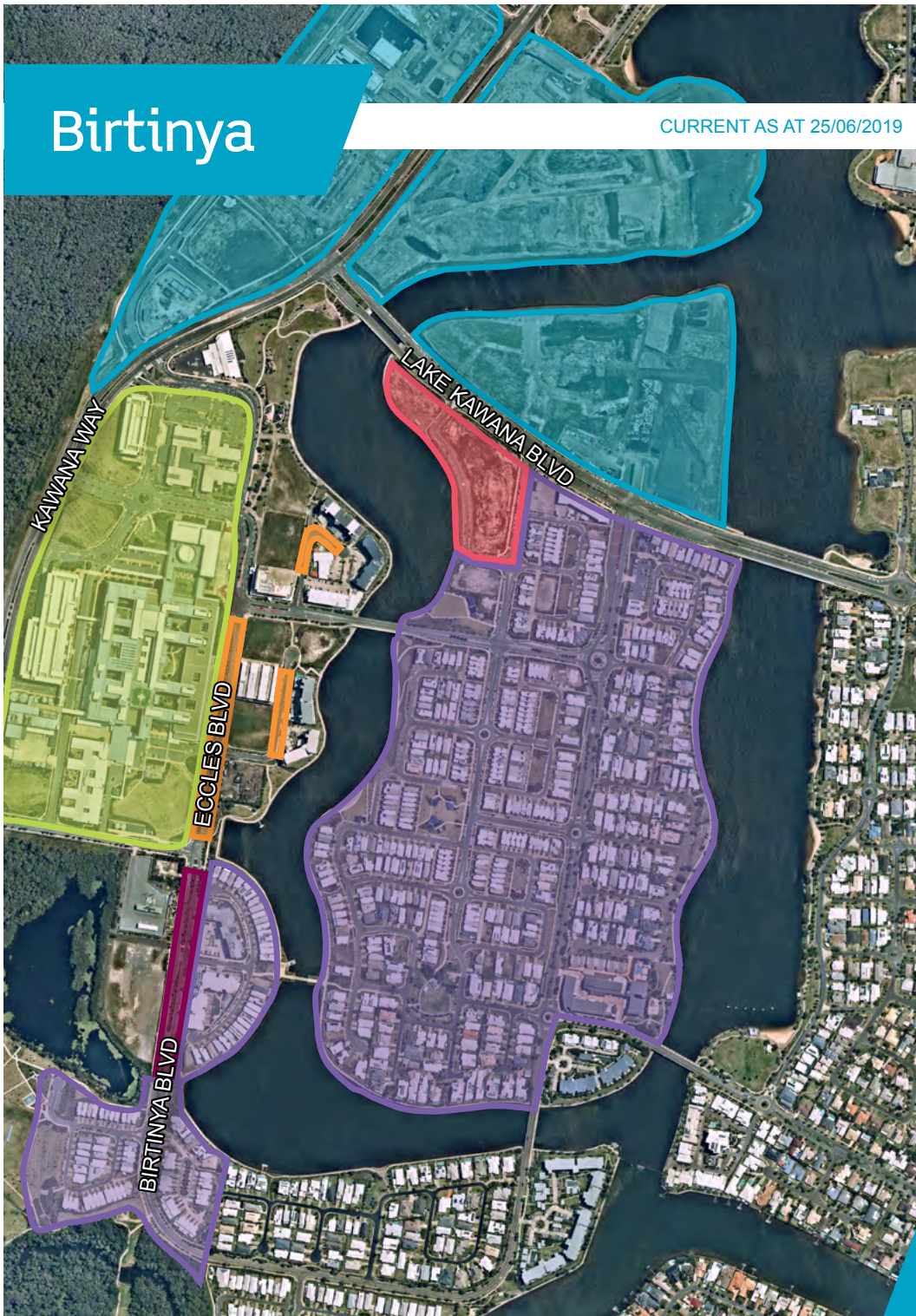


Birtinya

CURRENT AS AT 25/06/2019



1 Two-hour (2P) metered (paid) on-street parking

- 83 metered parking spaces along Eccles Blvd, Bright Pl and Shine Ct
- Maximum of two-hour (2P) paid metered parking, 7 days per week, 8am–5pm, including public holidays
- Maximum of two hours FREE parking 5pm–8am, as signed
- Parking meters encourage turnover, which is good for shoppers and good for businesses as it increases patronage
- Paying with the EasyPark app allow you to only pay for the time you actually use

2 Four-hour (4P) metered (paid) on-street parking

- 41 metered parking spaces along Birtinya Blvd
- Maximum of four-hour (4P) paid metered parking, 7 days per week, 8am–5pm, including public holidays
- Maximum of four hours FREE parking 5pm–8am, as signed
- Parking meters encourage turnover, which is good for shoppers and good for businesses as it increases patronage
- Paying with the EasyPark app allow you to only pay for the time you actually use

3 Sunshine Coast Health Campus

- This land is controlled by the Queensland Government
- There are privately run multideck car parks in this area
- There is no on-street parking available in this area

4 Future regulated on-street parking

- The parking management strategy will be rolled out further as these areas are developed

5 Residential parking permits

- A one-hour (1P) parking limit applies:
 - Monday to Friday 8am–5pm
 - Saturday 8am–noon
- Residential parking permits will be available to allow residents to park on the street for unlimited periods
- Permits not required to park in own driveway or garage

6 Future residential parking permits

PARKING AREA MAP