

Project number: P-H1244

## **Parklands Boulevard Upgrade Meridan Plains**

### **Directions for access to Meridan State College primary car park from Meridan Way**

**Temporary changes to traffic conditions, Monday 11 May to Sunday 24 May, 2020**

As per our previous construction notification (22 April) the Parklands Boulevard – Meridan Way intersection remains closed to vehicle traffic while a major upgrade to the intersection is underway.

The traffic signals at the intersection are currently turned off. Vehicles can continue to travel along Parklands Boulevard with one lane of traffic operating in each direction.

#### **Staged back to school Monday 11 May**

With prep and Years 1, 11 and 12 returning to school on Monday 11 May, Council wishes to ensure that parents and carers can easily access Meridan Way and the Meridan State College primary car park for school drop off and pick up.

Please see the **map on page 2** of this notice and read the following information to assist you in getting your child/children to and from school easily.

We ask that you please allow an additional 5-10 minutes of travel time where possible.

#### **Temporary changes to traffic conditions**

##### **Access to Meridan Way via Hamilton Street roundabout**

Both entries and exits of the primary school car park will be accessible from Meridan Way via the Hamilton Street roundabout.

Detour signage and road barriers will be in place to assist motorists. Reduced speed limits will apply.

Pedestrian and cycle access will remain to the school via Parklands Boulevard and Meridan Way.

#### **Traffic control on site, Monday 11 May – Wednesday 13 May during drop off and pick up**

To assist parents and carers to become familiar with the temporary conditions, traffic controllers will be on site on Meridan Way during peak school pick up and drop off times (7.30am – 9am and 2.00pm – 3.30pm). Please obey their instructions for your and your children's safety.

Council will continue to monitor government directives around plans for Years 2-10 to return to school on Monday, May 25 and modify traffic conditions as applicable.

We thank the Meridan State College community for your patience and cooperation to date.

#### **Register to receive construction updates**

Council's primary method of communicating construction information is via email updates.

If you, or someone you know wishes to receive future updates please email your/their contact details including name, business name (if applicable), email address and phone number to: [parklandsboulevard@sunshinecoast.qld.gov.au](mailto:parklandsboulevard@sunshinecoast.qld.gov.au)

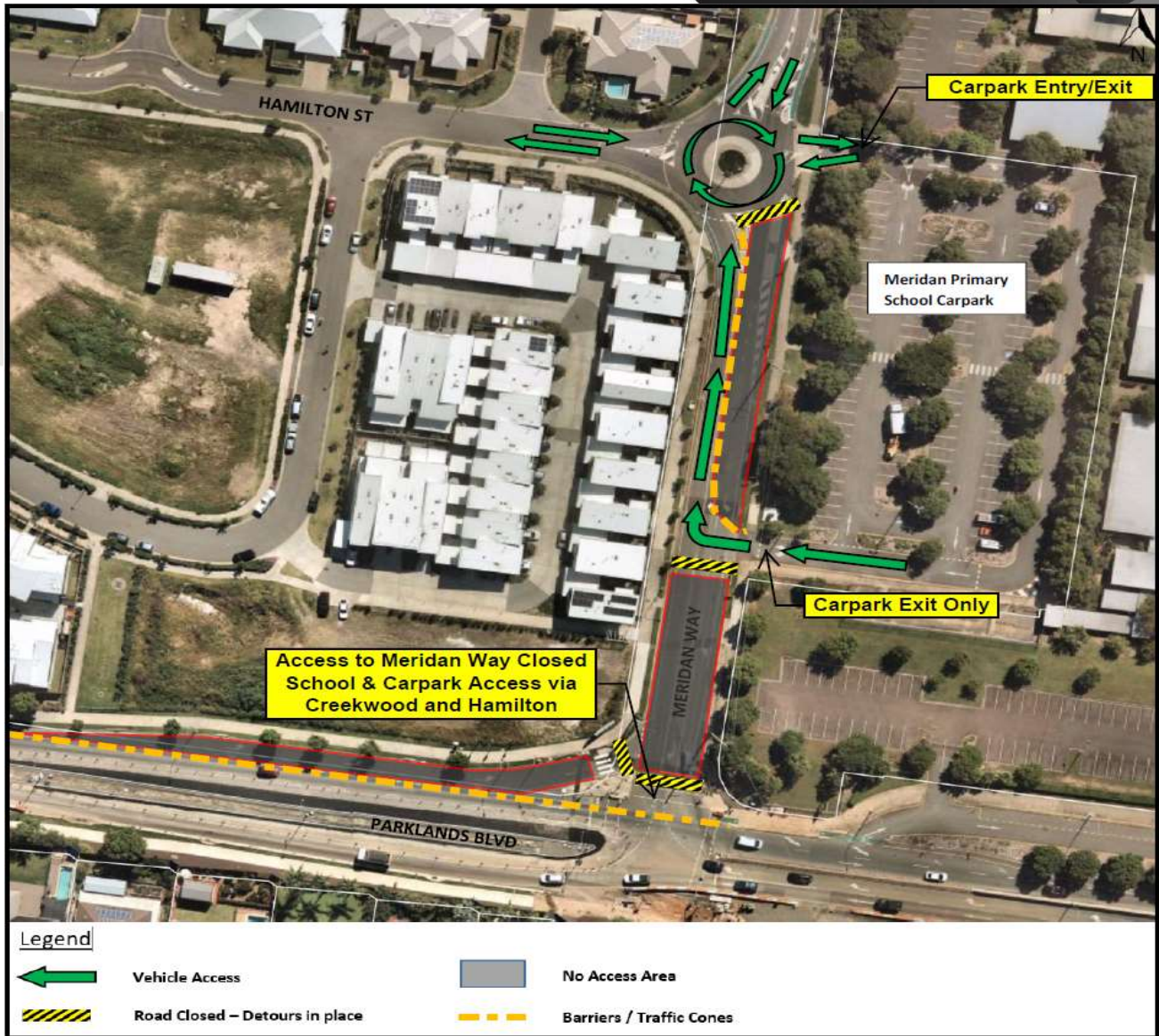


Figure 1. Access to Meridan State College primary car park - temporary changes to traffic movements.

### Contact the project team

For any questions about the Parklands Boulevard Upgrade project, please visit the website at [www.sunshinecoast.qld.gov.au](http://www.sunshinecoast.qld.gov.au) (search for Parklands Boulevard project) or contact the project team on:  
 E: [parklandsboulevard@sunshinecoast.qld.gov.au](mailto:parklandsboulevard@sunshinecoast.qld.gov.au)  
 P: Council's customer service team on 5475 7272 (please quote Parklands Boulevard)

All information contained in this communication is accurate at the time of distribution however works and dates are subject to change due to circumstances outside of Sunshine Coast Council's control.

[www.sunshinecoast.qld.gov.au](http://www.sunshinecoast.qld.gov.au)  
 mail@sunshinecoast.qld.gov.au  
 T 07 5475 7272 F 07 5475 7277  
 Locked Bag 72 Sunshine Coast Mail Centre Qld 4560