

Landsborough

Cribb Street Streetscape

Project number: P-H1246

Zone 1B works (Monday 1 June – early July) and temporary changes to traffic conditions (weather and site conditions permitting)

Stage 1 works for the \$3.3million Cribb Street upgrade have commenced. Works include:

- footpath widening and new pavement areas
- additional landscaping, including new street trees and furniture at key areas
- raised pedestrian crossings with lighting
- parking reconfiguration - parking bays will change from parallel to 90-degree parking on the park side of Cribb Street
- interpretive signage and public artwork

Stage 1 Construction schedule and approach

Construction is taking place from 14 April – late October 2020. To minimise inconvenience to the community, construction has been staged and separated into zones - 1A, 1B, 1C & 1D.

Construction hours are generally Monday to Friday, 7am to 5pm. Some night and Saturday works will be required.

Pedestrian access will remain to businesses and residences during construction works with vehicle access remaining wherever safe and possible to do so. The project team is liaising with adjacent residents and businesses to keep them informed and assist with planning.

Following on from Zone 1A works, Zone 1B works will commence next month (June).

Zone 1B. Monday 1 June – early July 2020. Business side of Cribb Street from Buck's Bakery into part Mill Street.

Zone 1B works include road and kerb works, driveway works, garden areas, footpath and lighting works.

Temporary changes to parking and traffic conditions

To enable Stage 1B construction to progress as safely and quickly as possible some changes to parking and traffic conditions are required. These include:

- Left turn only from Cribb Street into Mill Street
- One-way traffic for part of Cribb Street (from Mill Street intersection to Gympie Street North)
- No access from Gympie Street North into Cribb Street
- No access from Mill Street into Cribb Street
- Mill St will be sign posted as 'local traffic only' and vehicle access will remain to the Landsborough Hotel and IGA Supermarket
- The newly constructed on-street parking opposite Buck's Bakery is now open
- Signage and traffic control will be in place to assist motorists. Detours will be in place.

Parking: For safety reasons, some on-street parking bays will be temporarily unavailable during construction. The project team will keep the maximum number of bays possible open.

See the **map below** for further information.

COVID-19. The project team will continue to follow the direction of the Commonwealth and State Governments.

Register to receive construction updates

To receive future updates please email your name, business name (if applicable), address, phone number and email address to:
cribbstreetupgrade@sunshinecoast.qld.gov.au

We thank you for your patience and cooperation during these works.

Further information

Sunshine Coast Council

www.sunshinecoast.qld.gov.au

mail@sunshinecoast.qld.gov.au

T 07 5475 7272 F 07 5475 7277

Locked Bag 72 Sunshine Coast Mail Centre Qld 4560

Visit council's website or contact council's customer service team (quote Cribb Street)

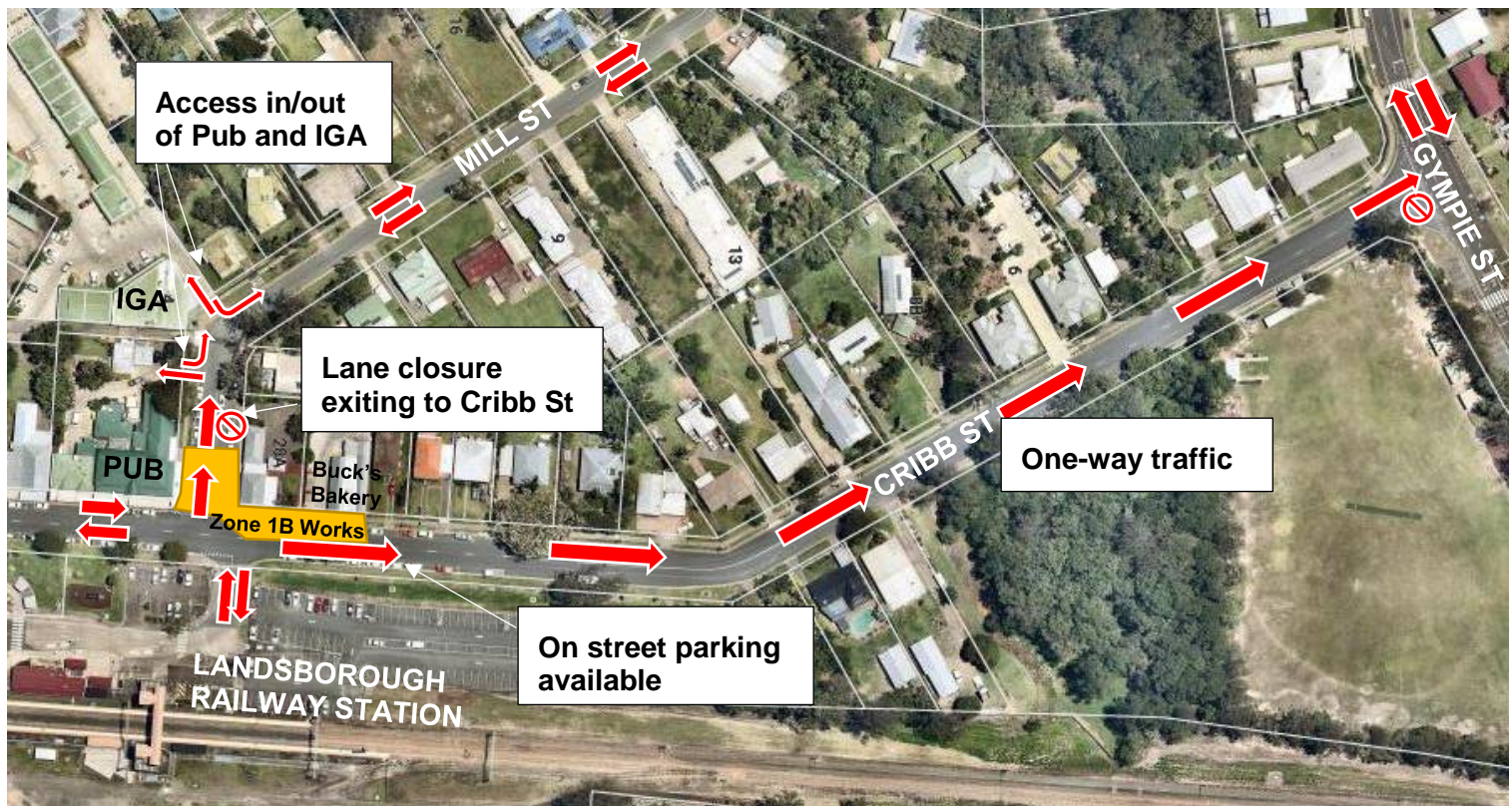


Figure 1. Zone 1B works - temporary one-way part Cribb Street traffic and one-way only from Cribb St into Mill St. From 1 June to early July 2020 (weather dependent).