

**Mooloolaba Transport Corridor  
Upgrade (MTCU) Project**  
*Stage 1b – Walan Street, Mooloolaba*

Project number: H9272

**Notice to residents and businesses**  
**Stage 1b update & Smith Street & Naroo Court works 8 - 13 October**  
(day & night works, weather & site conditions permitting)**Stage 1b construction schedule  
update**

We would like to thank residents and businesses for your ongoing patience and cooperation during the temporary through-traffic closure of Walan Street (between Venning and Smith streets). Local access remains available for residents, businesses and their customers within the construction zone.

The extensive water main, stormwater and road construction works are progressing well. As per our previous update of 13 August, the temporary Walan Street closure is expected to remain in place until late November 2020.

The road reopening date will be determined by the progress of works over the coming weeks (weather and site conditions permitting) however Walan Street will be reopened in preparation for the peak December holiday period. We will continue to keep you informed.

All Stage 1b major infrastructure construction works are expected to be complete by late December 2020. Some landscaping, traffic signal commissioning and minor road works, will continue through to early 2021.

Construction hours will remain as primarily between 7am – 6pm, Monday - Saturday however some weekend and night works will be required from now until the end of the project.

Weekend and night works are necessary to minimise construction impacts to businesses and residents as underground services are installed under pedestrian pathways and across driveways. Alternative parking and access will be provided as required.

The following works have been scheduled to take place after the current Queensland school holiday period.

**Temporary changes to local traffic  
conditions and construction works****Thursday 8 October 5pm - Saturday 10  
October 6pm inclusive (day and night  
works). Walan Street and Naroo Court  
intersection closure for stormwater culvert  
installation**

From Thursday night until early evening on Saturday construction crews will be working at the Walan Street – Naroo Court intersection. These works must be undertaken at this time to help minimise construction impacts to businesses and residents.

A large trench will be dug on the southern end (Walan Street end) of Naroo Court to accommodate new stormwater culverts. After the culverts are installed, the trench will be backfilled, and a temporary surface applied.

The final footpath and road surfaces will be applied at the end of the project.

## **Access to Naroo Court and Walan Street residences and businesses**

- **Access for residents:** Vehicle and pedestrian access will remain to Naroo Court residences.
- **Access for businesses at 20 Walan Street:** Pedestrian access remains. Vehicle access to the driveway and onsite car park will be temporarily unavailable. Alternative parking will be provided.

The construction team will continue to liaise with directly affected residents and businesses.

Traffic management devices will be in place. Please obey traffic control, signage and take extra care when driving through construction zones.

***Please see Figure 1 on Page 3 for the location of these works and alternative parking for 20 Walan Street.***

## **Tuesday 13 October 6.30am – 6pm (day works). Smith Street temporary road closure for water main installation**

A section of Smith Street from Walan Street to Muraban Street will be closed to vehicle traffic in order to complete the final section of water main installation in this area.

This section of Smith Street will be closed to all vehicle traffic from Brisbane Road and Walan Street. Detours will be in place via First Avenue.

Local access for Smith Street residents and businesses in the closed road section will be via First Avenue as directed by traffic control.

***Please see Figure 2 on Page 3 for the location of these works.***

## **What to expect during these works?**

Due to the size and construction logistics associated with the large water main pipes and stormwater culverts, large machinery will be in operation.

These works are expected to generate medium – high level intermittent noise. Reversing beepers and flashing lights are a safety requirement.

The construction team will try to mitigate noise impacts wherever possible and safe to do so.

Construction workers will liaise with directly adjacent residents and businesses during construction.

## **Emergency vehicle access**

Emergency vehicle access will remain to all areas under traffic control.

## **Register to receive project updates**

To receive regular project updates throughout the construction period, please register your contact details by emailing your details to

[mooloolabatransportcorridorupgrade@sunshinecoast.qld.gov.au](mailto:mooloolabatransportcorridorupgrade@sunshinecoast.qld.gov.au)

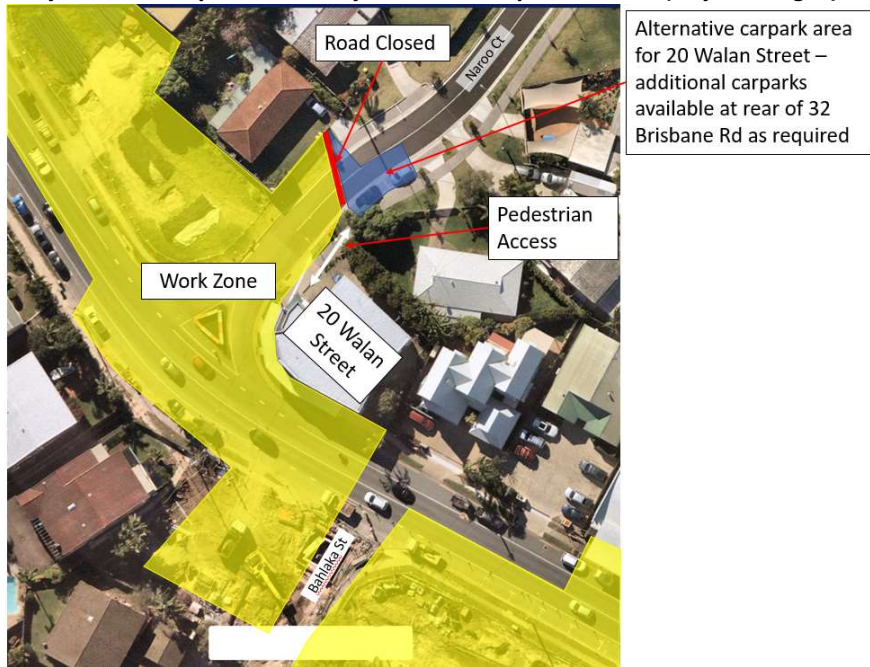
## **Contact the project team**

For further information, you can contact the project team on 1800 531 597 (during office hours, Monday to Friday 8.30am – 5pm) or email

[mooloolabatransportcorridorupgrade@sunshinecoast.qld.gov.au](mailto:mooloolabatransportcorridorupgrade@sunshinecoast.qld.gov.au)



**FIGURE 1:**  
**Walan Street and Naroo Court intersection closure for stormwater culvert installation inc. alternative parking. Thursday 8 October 5pm – Saturday 10 October 6pm inclusive (day and night)**



**FIGURE 2: Smith Street to Muraban Street closure for water main installation. Tuesday 13 October 6.30am – 6pm (day works).**

